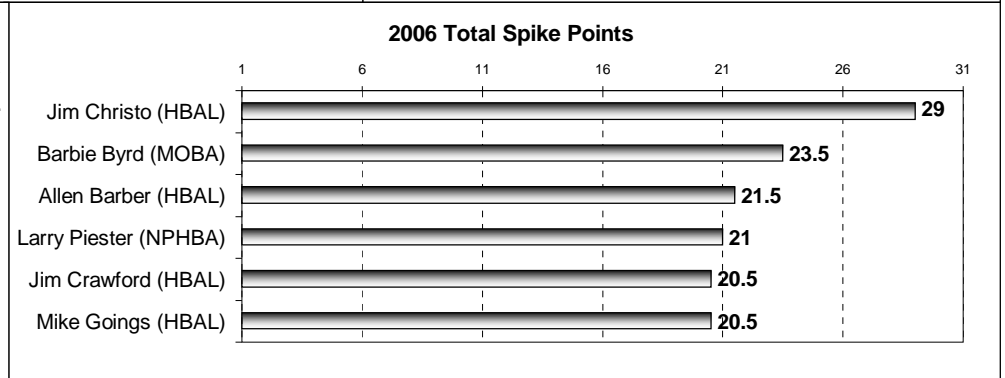
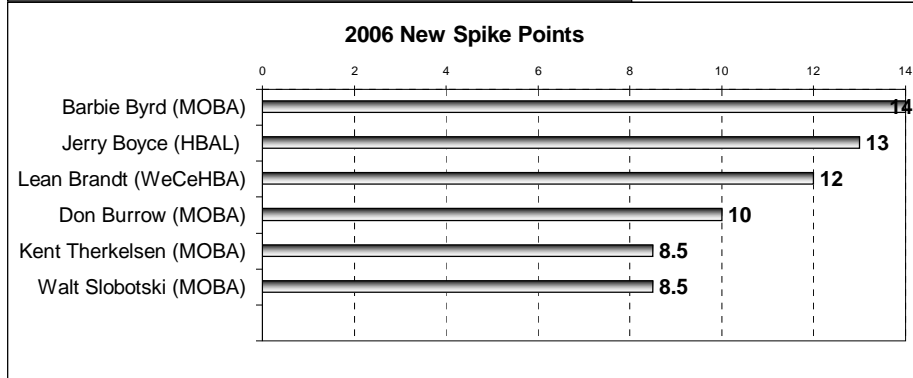
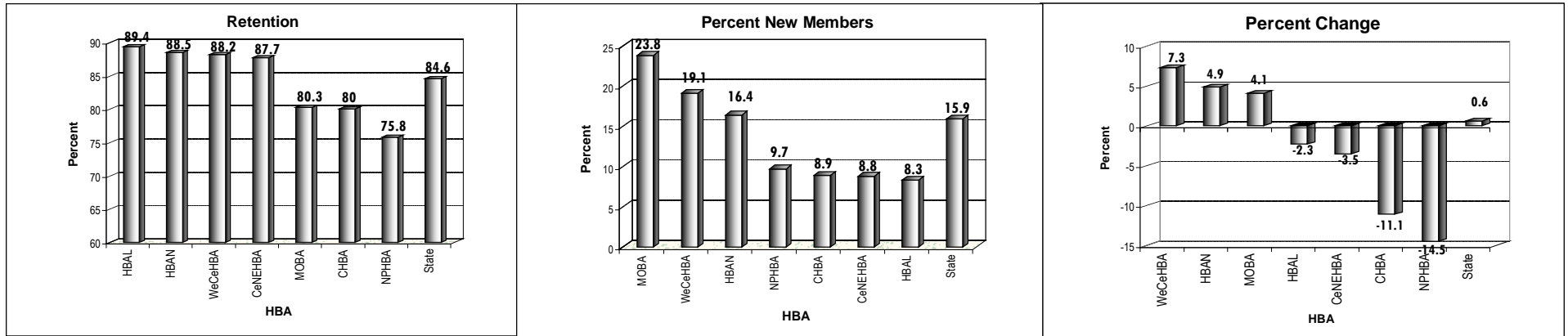


**2006 NSHBA Membership Report**  
as of September 30th, 2006  
Base: December 2005



**NSHBA MEMBERSHIP SUMMARY**

**YEAR-TO-DATE**

ASSN # NAME	BLDRS	ASSOC	TOTAL AFFL no/affl	Tot. w/affl Y-T-D	Dec. 05	Gain/Loss		CANCELS		New Members				
						#	%	month	Y-T-D	Retn. Rate	month	Y-T-D	% New	
2805 Columbus HBA	19	21	40	40	45	-5	-11.1%	0	16	80.0%	0	4	8.9%	
2818 Central Nebraska HBA	20	35	55	55	57	-2	-3.5%	2	26	87.7%	0	5	8.8%	
2836 HBA of Lincoln	143	421	564	564	577	-13	-2.3%	6	87	89.4%	5	48	8.3%	
2854 North Platte HBA	13	39	52	1	53	62	-9	-14.5%	4	47	75.8%	0	6	9.7%
2872 Metro. Omaha Bldrs Assn	177	375	552	131	683	656	27	4.1%	6	190	80.3%	15	156	23.8%
2890 HBA of Norfolk	22	41	63	1	64	61	3	4.9%	2	23	88.5%	2	10	16.4%
2897 West Central Nebraska HBA	37	71	108	10	118	110	8	7.3%	3	17	88.2%	0	21	19.1%
2800 NEBRASKA STATE HBA	431	1003	1434	143	1577	1568	9	0.6%	23	406	84.6%	22	250	15.9%

	(As of September 06)	Total Membership	Percent Change
Region A	New England	32,657	6.30%
Region B	Southeast	74,295	9.80%
Region C	Ohio Valley	55,039	-0.70%
Region D	Midwest/South (Nebraska)	33,546	3.30%
Region E	Pacific	44,060	5.60%

Nebraska is up 0.6%